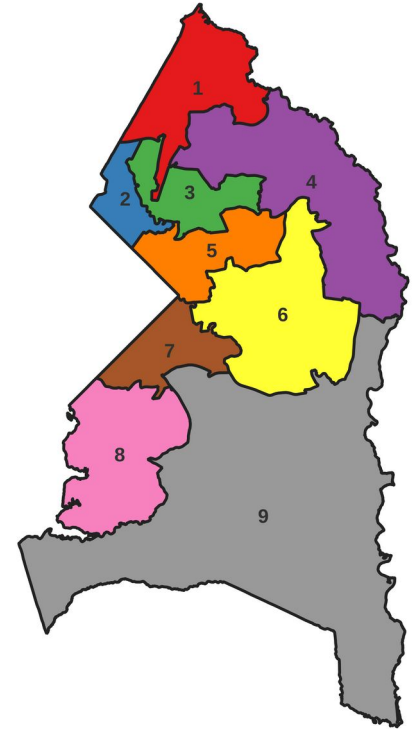


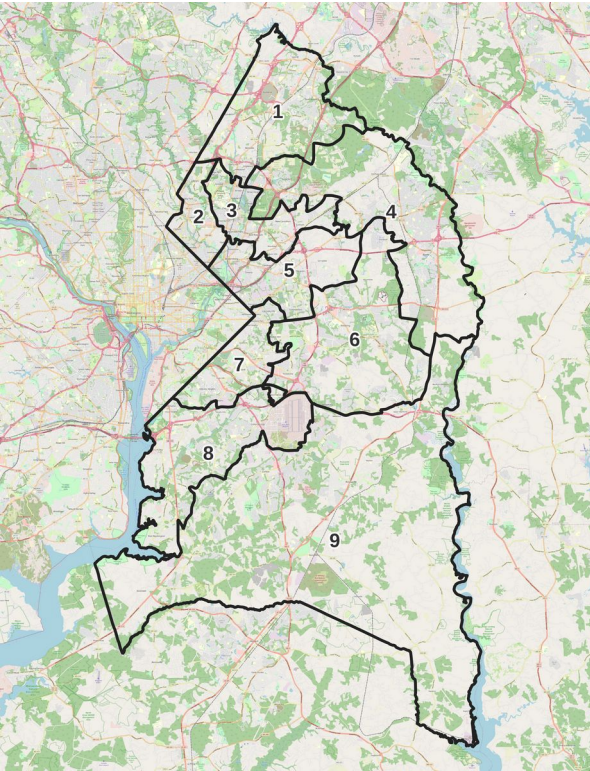
A Comparison of the Commission and Davis-Franklin Proposals

by DW Rowlands
13 Nov 2021



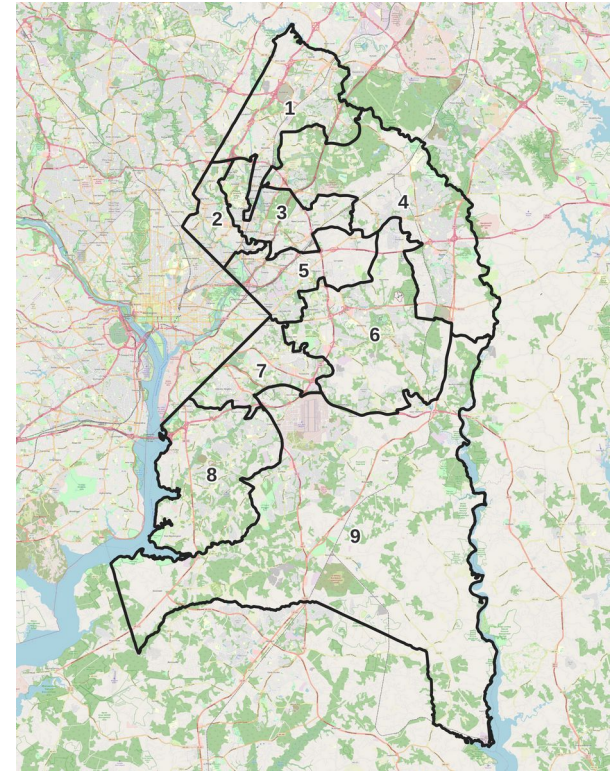
The Two Proposals

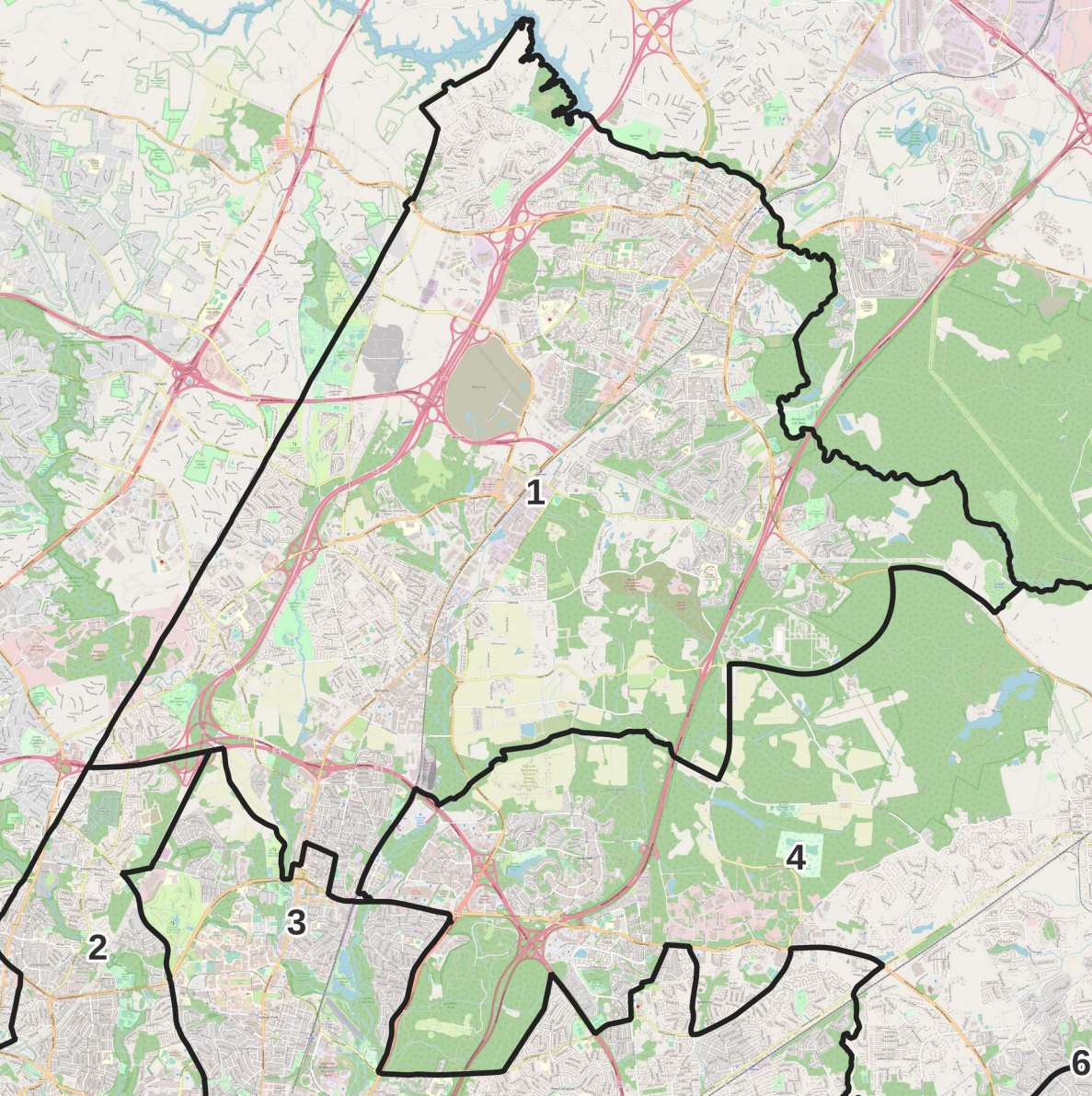
Redistricting Commission Proposal



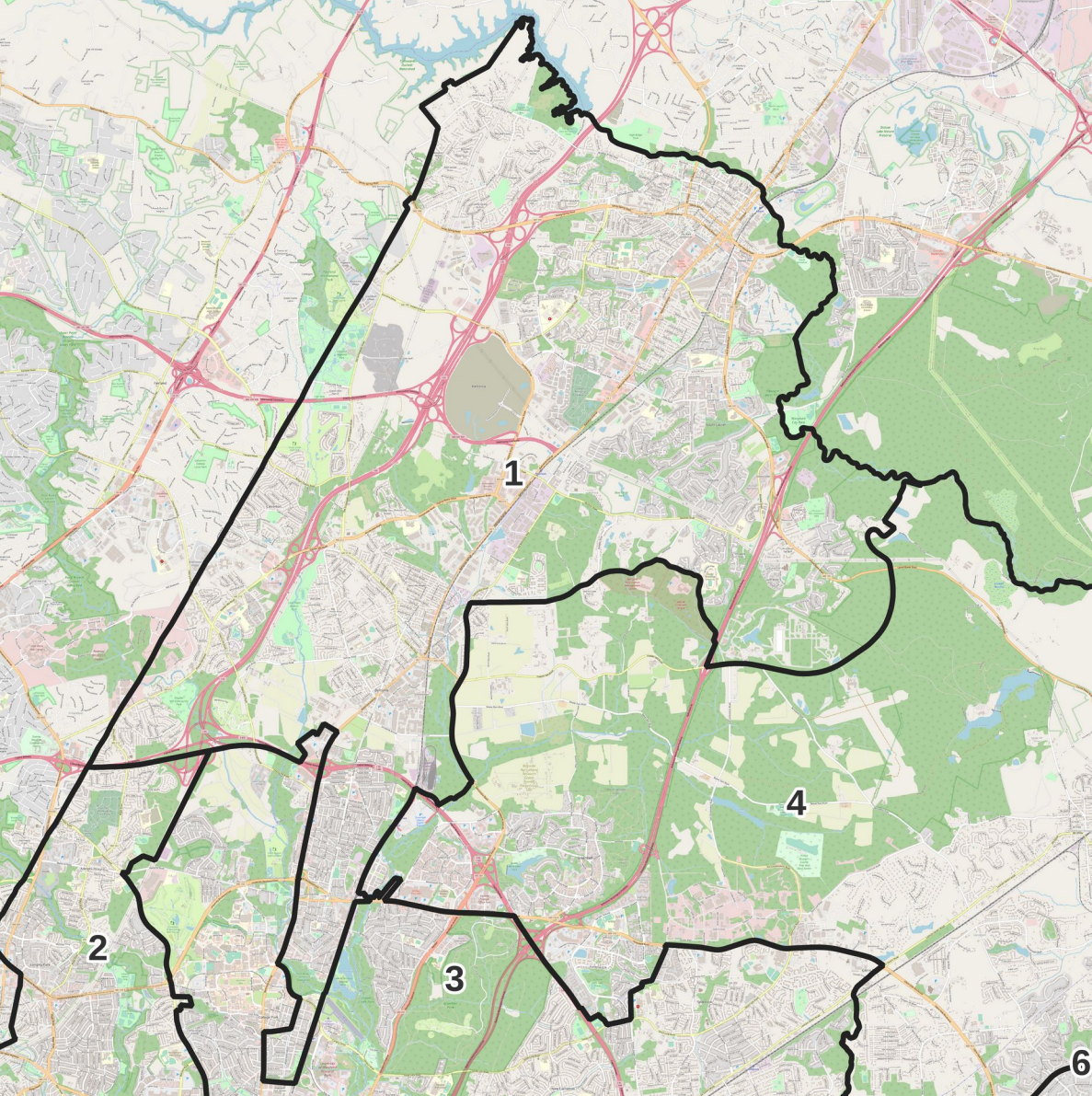
- The Redistricting Commission proposal is a “least-change” proposal:
 - Close to current districts.
 - Three minor changes to keep district populations constant.
- The Davis-Franklin proposal makes more significant changes:
 - Every district has significant changes.
 - Largest changes inside Beltway.

Davis-Franklin Proposal (Resolution 123-2021)





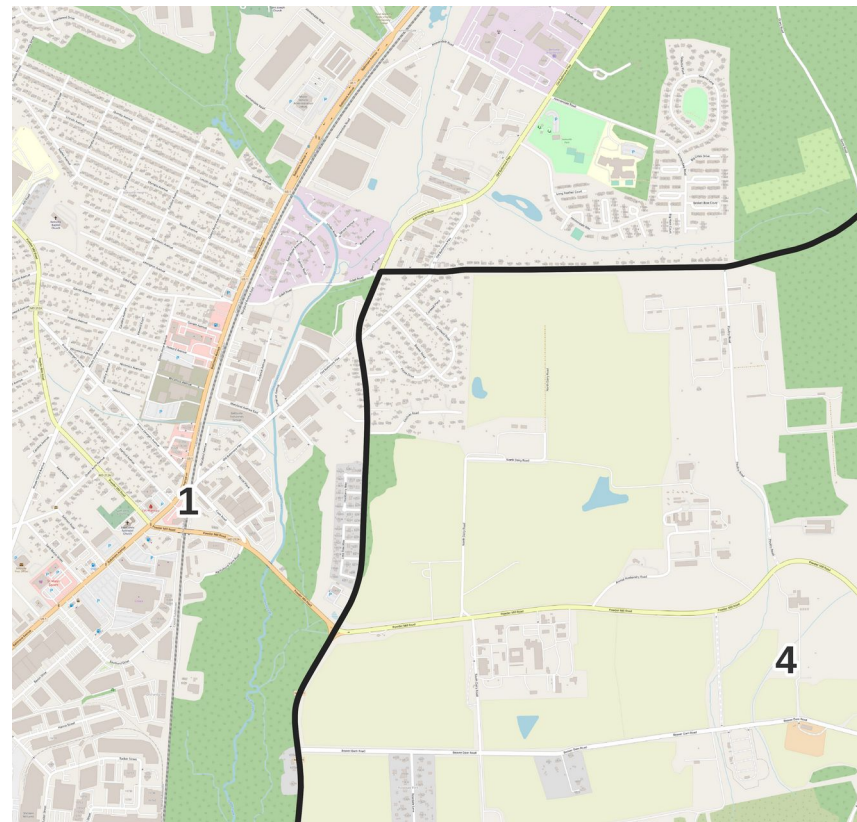
District 1: Commission Proposal

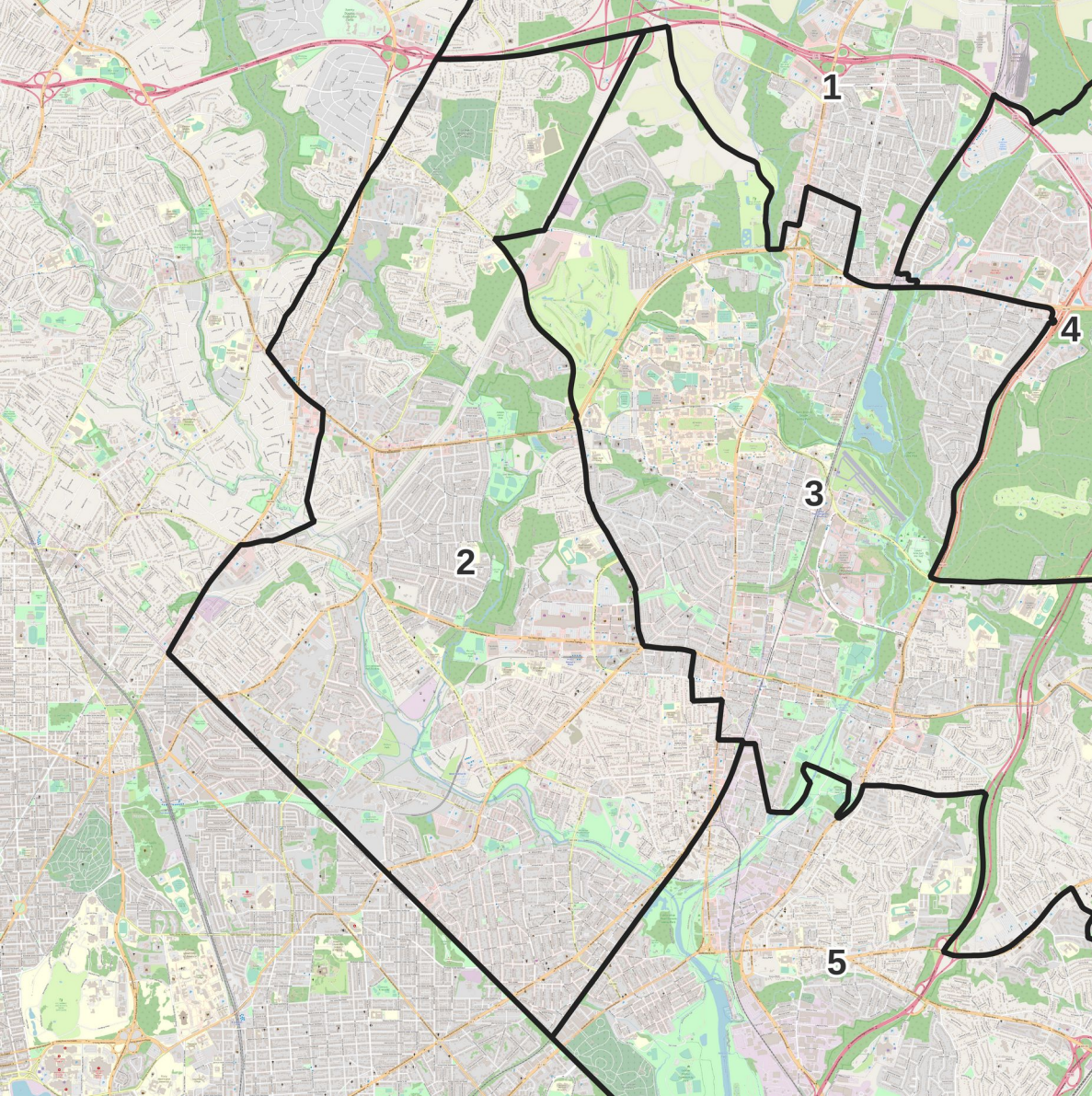


District 1: Davis-Franklin Proposal

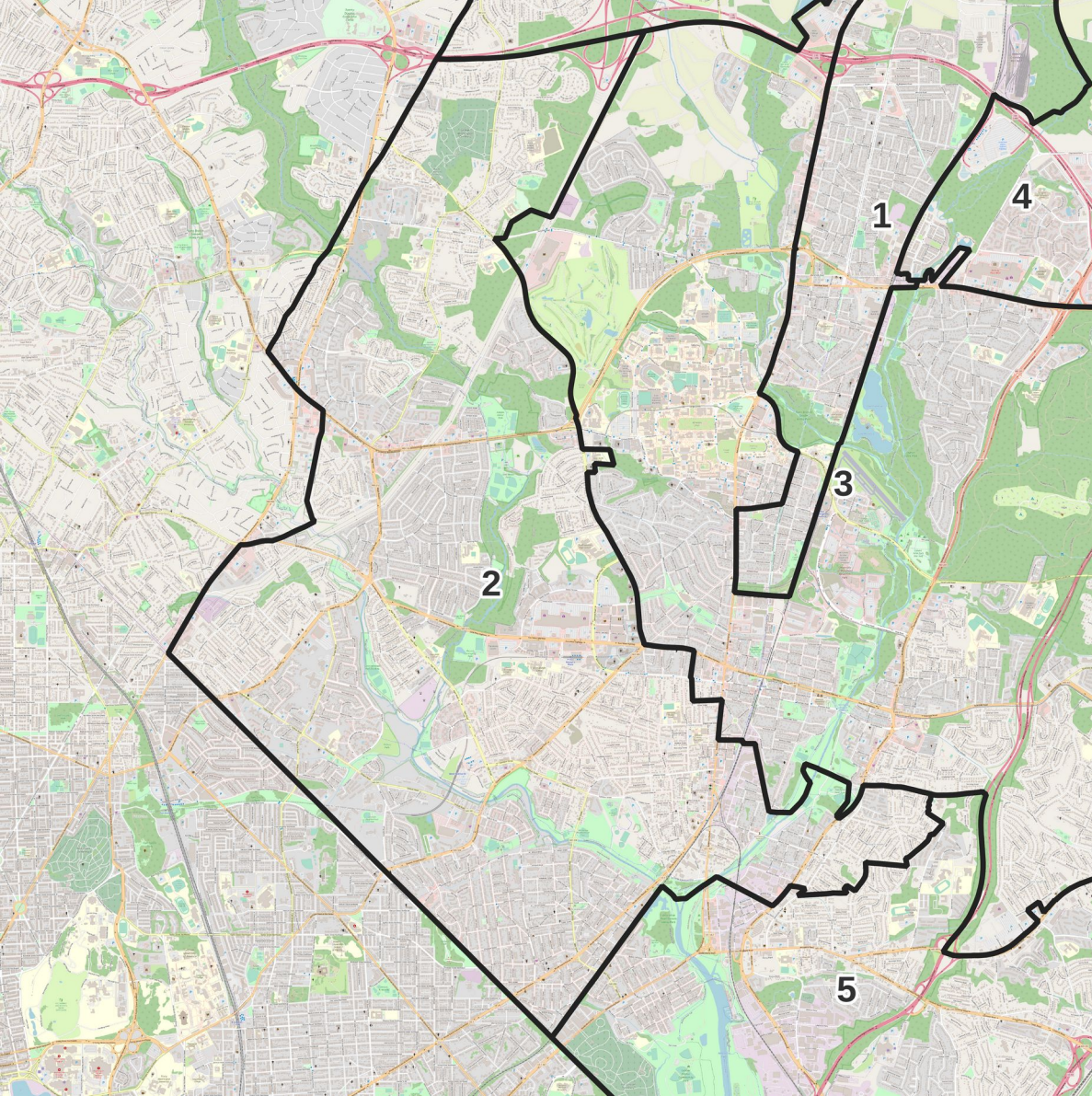
Close-Up on Vansville:

A historic Black community split by the Davis-Franklin Plan.



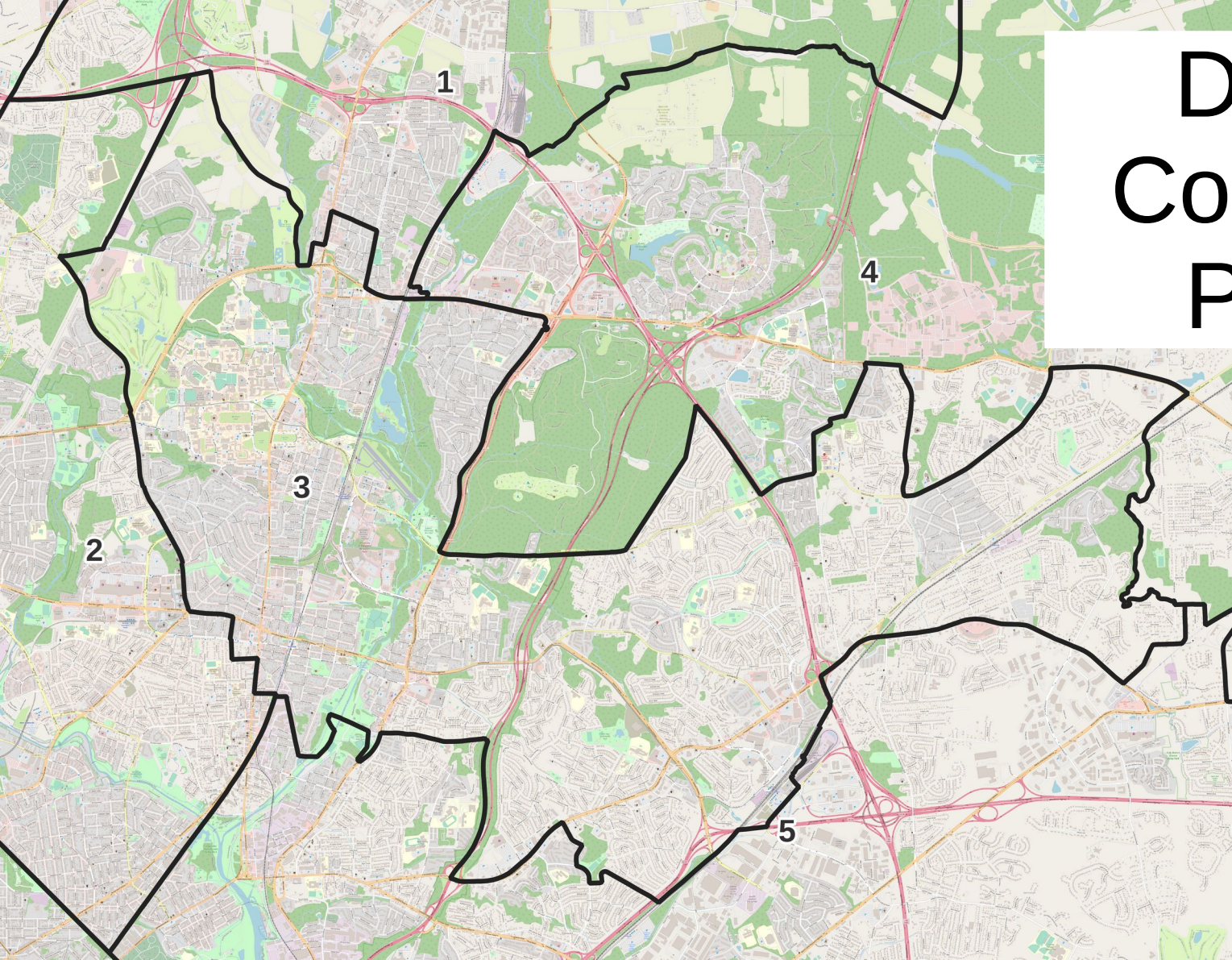


District 2: Commission Proposal

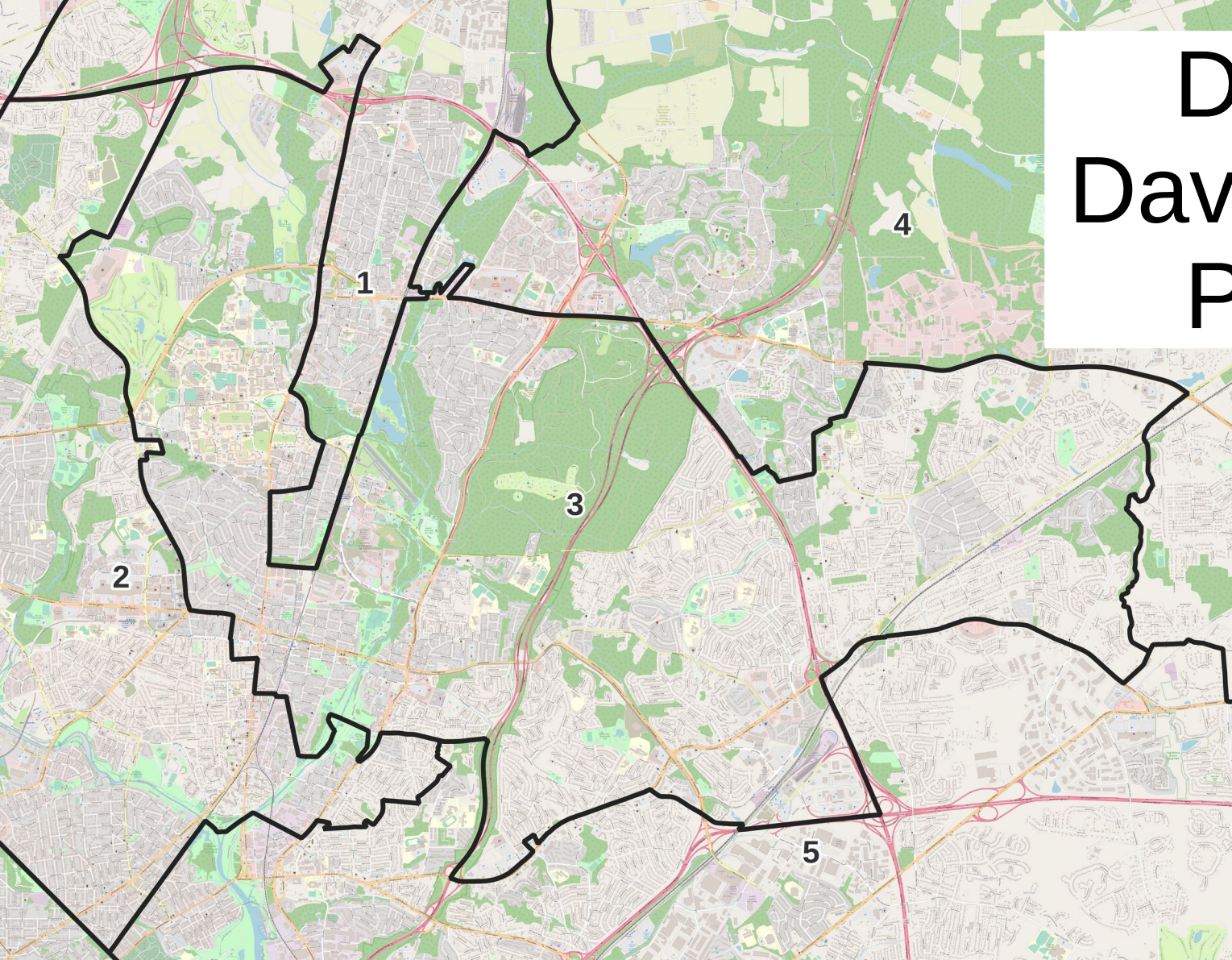


District 2: Davis-Franklin Proposal

District 3: Commission Proposal

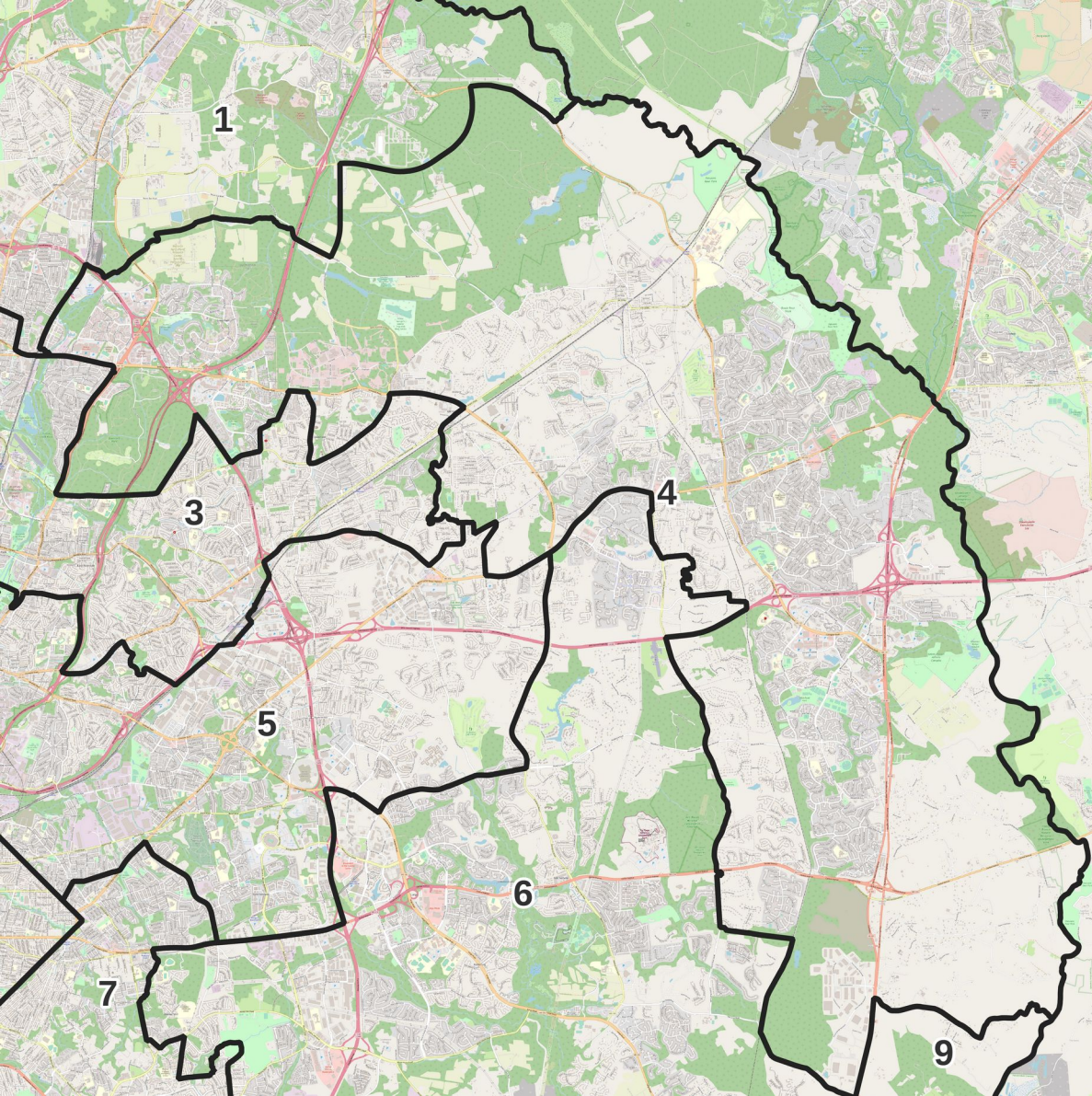


District 3: Davis-Franklin Proposal

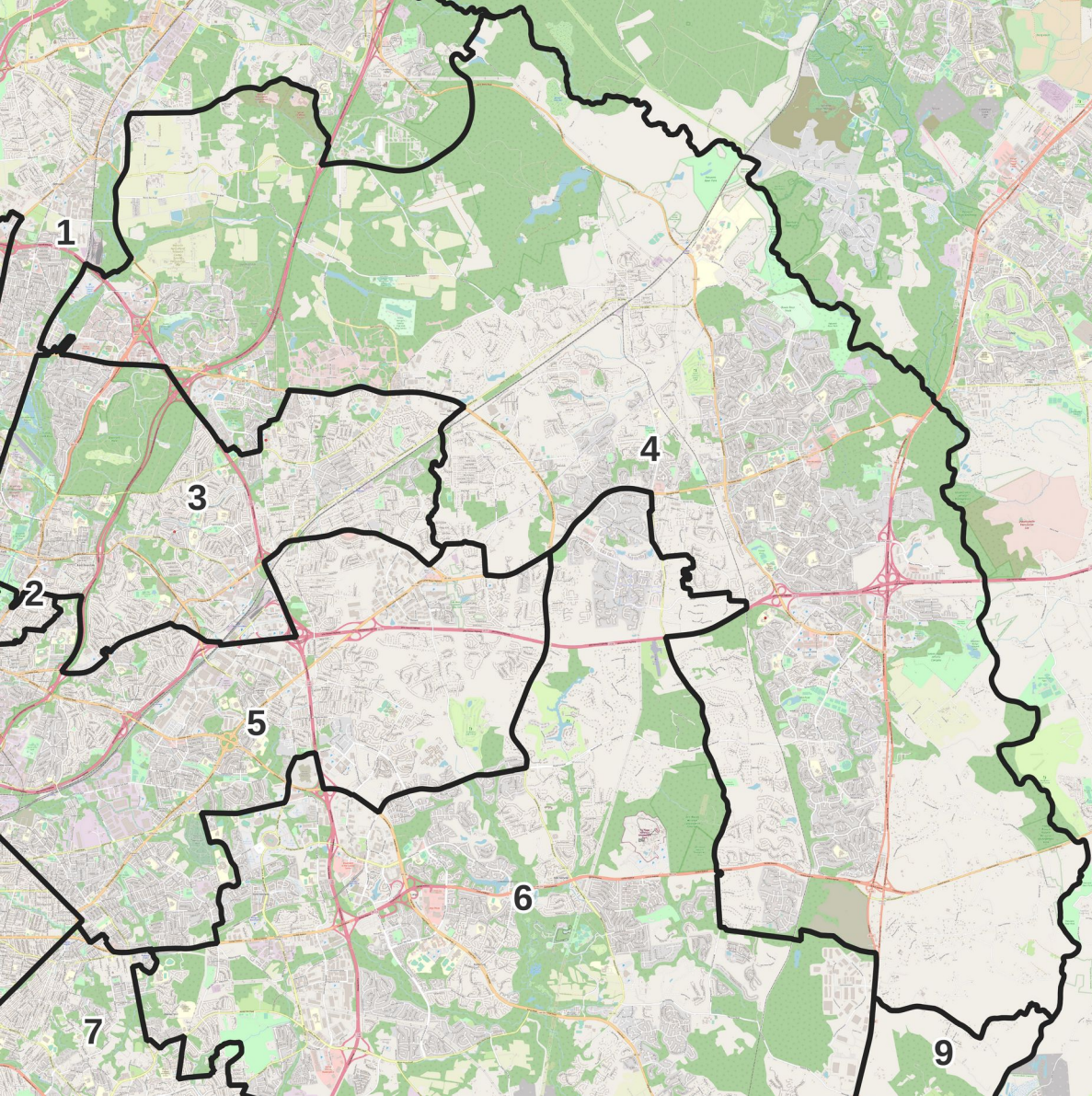


Breaking up Communities in College Park

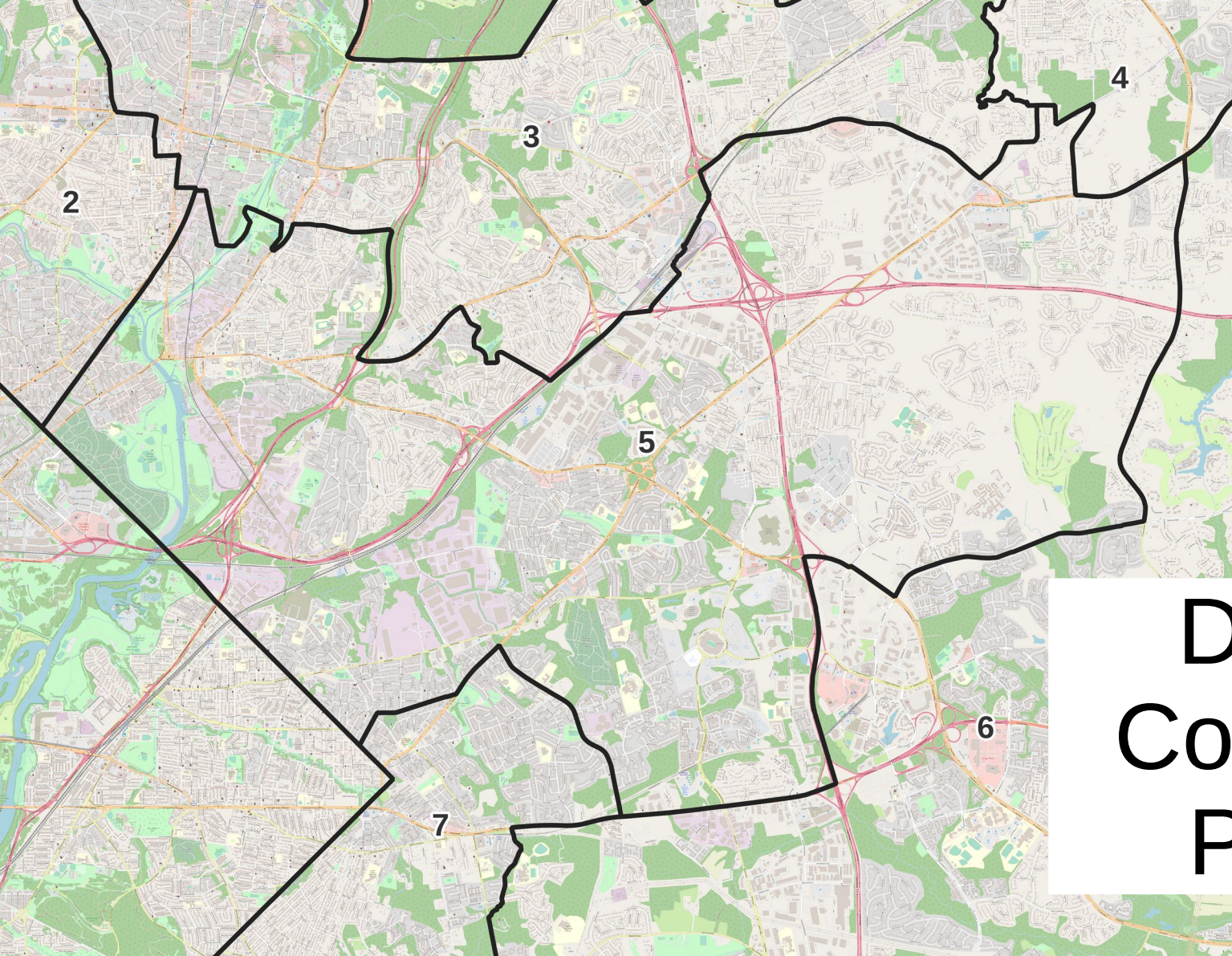
- Davis-Franklin proposal divides the Route 1 Corridor in two lengthwise, frustrating redevelopment planning.
- Davis-Franklin proposal separates UMCP campus from neighborhoods most impacted by it.
- Davis-Franklin proposal separates Lakeland from the rest of District 3, throwing a wrench in historically-Black community's quest for reparations.



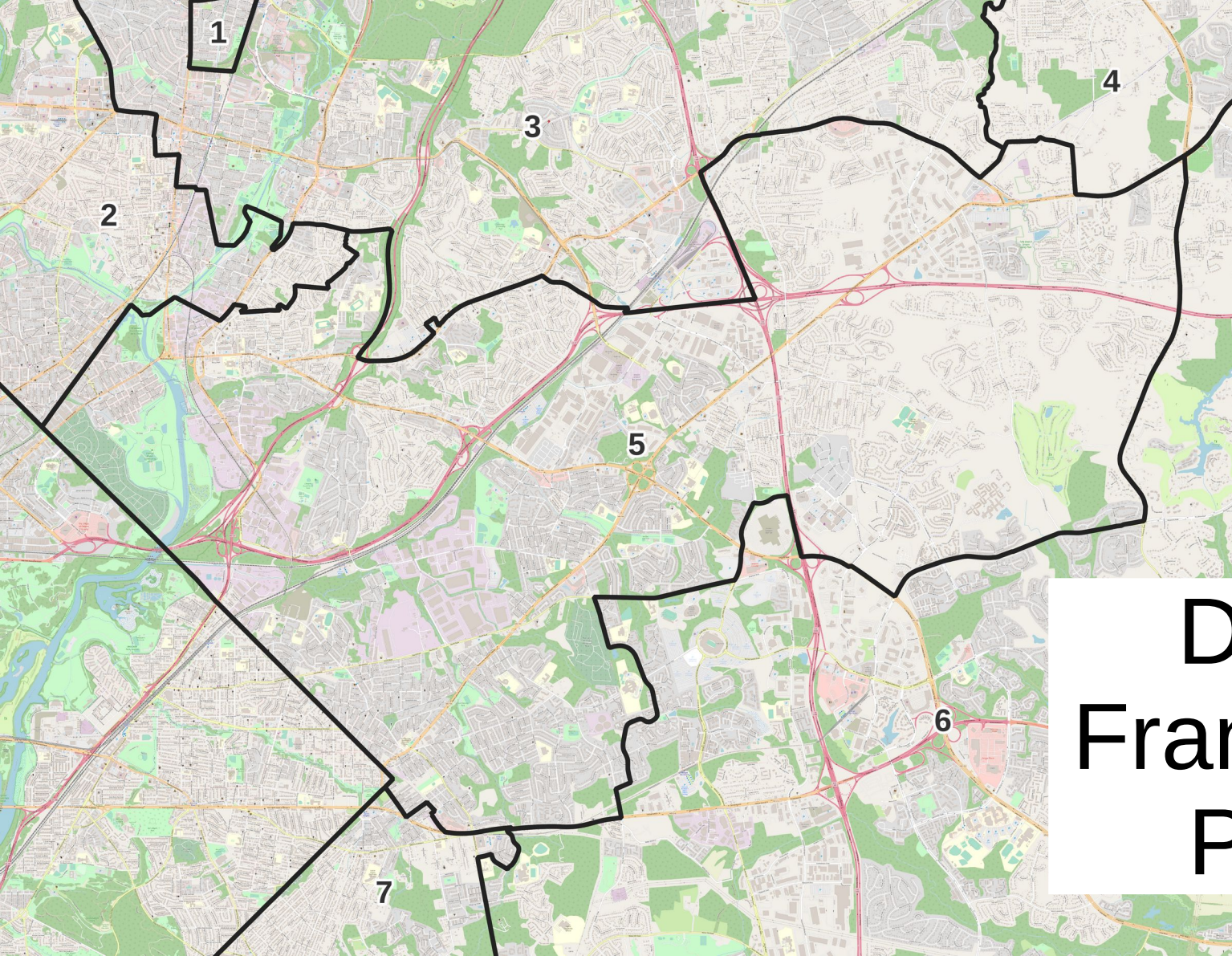
District 4: Commission Proposal



District 4: Davis-Franklin Proposal



**District 5:
Commission
Proposal**



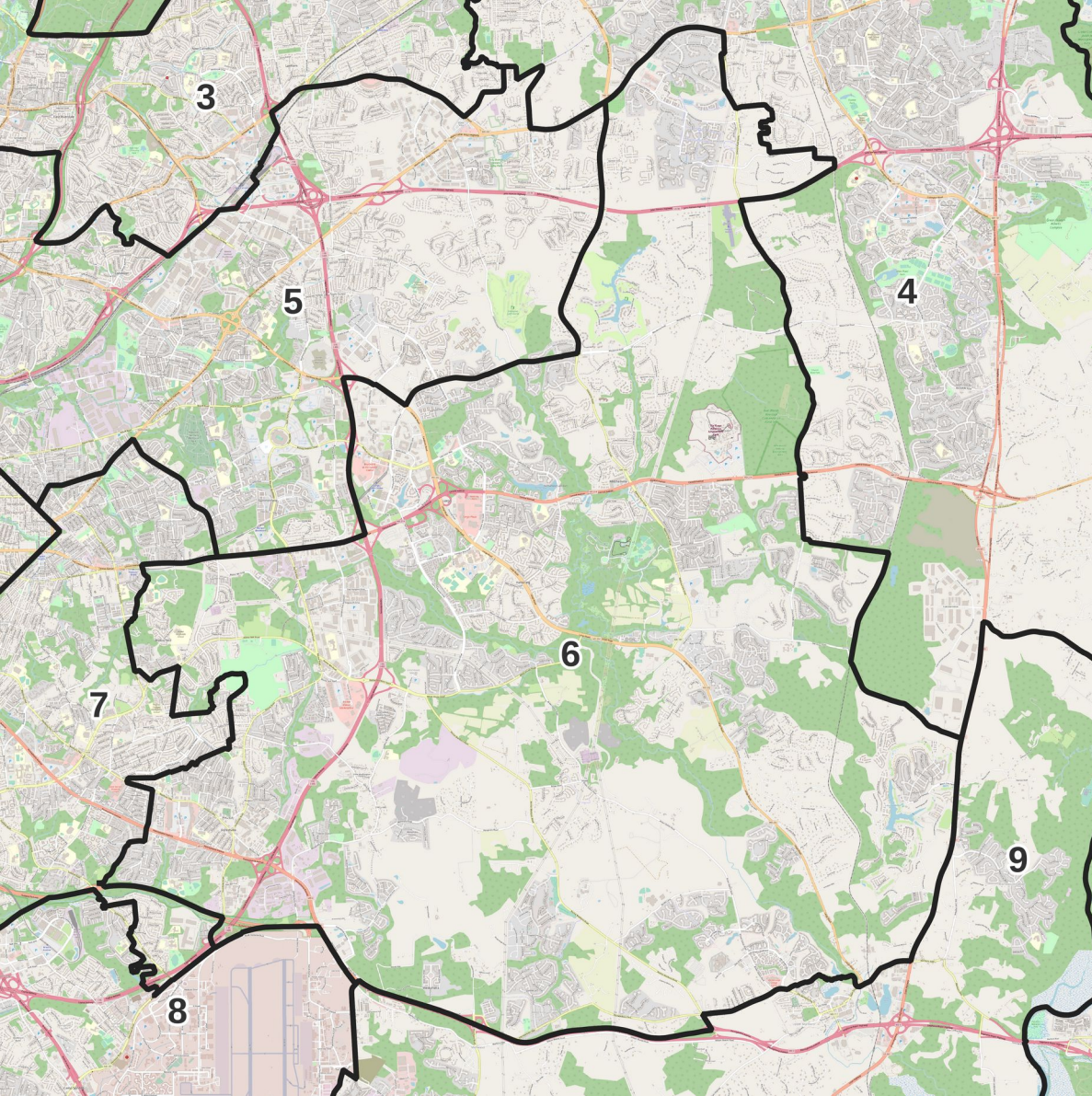
District 5: Franklin-Davis Proposal

FedEx Field and Landover Mall Site Moved to District 6

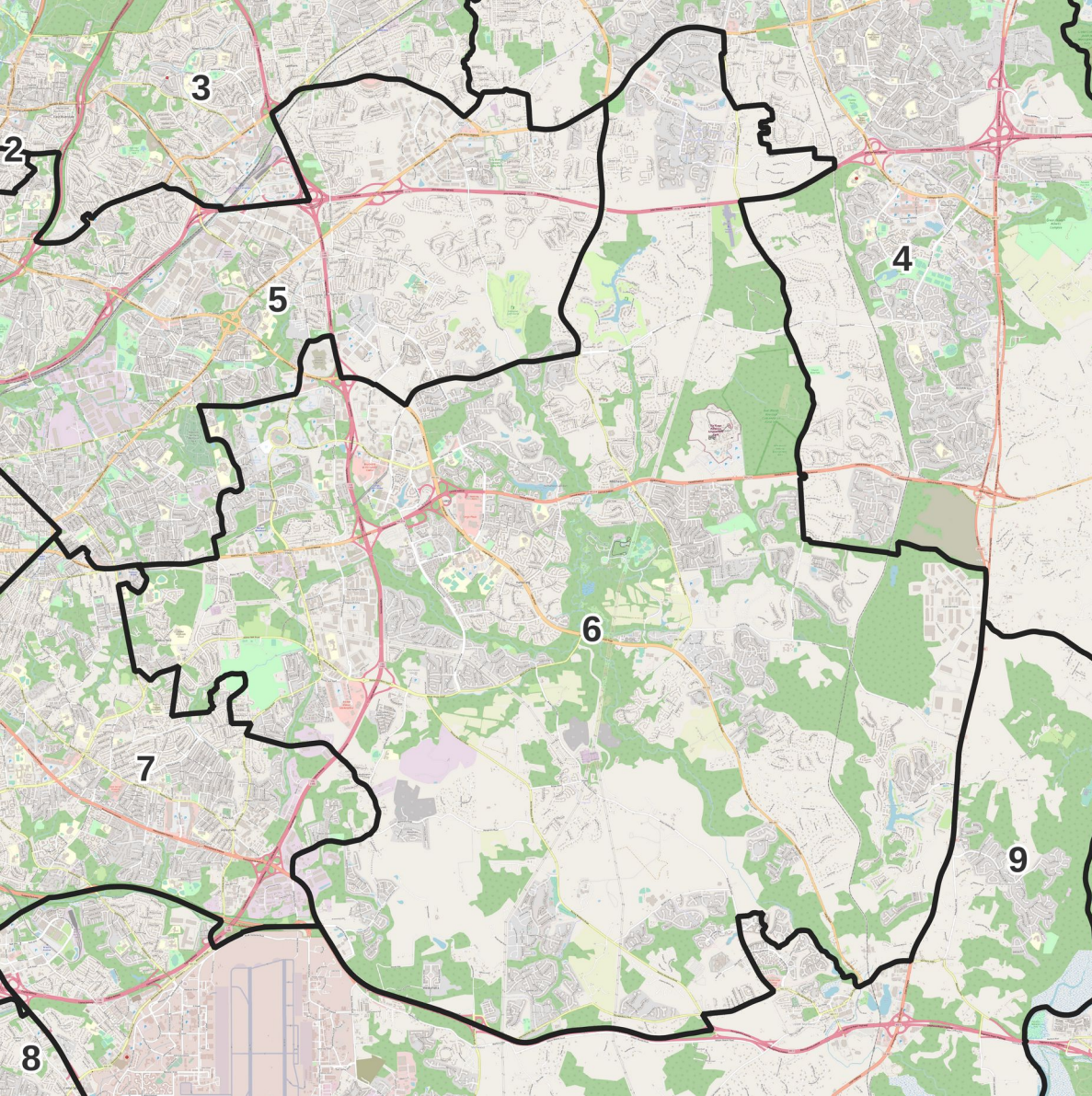
- Landover Mall site is its own precinct and block with no residents, and in a block group not otherwise in District 6.
- Site is a major target for redevelopment by the county.
- Davis-Franklin plan moves it from District 5 to District 6.
- Potentially gives Davis's successor influence over the redevelopment.

FedEx Field and Landover Mall Site Moved to District 6

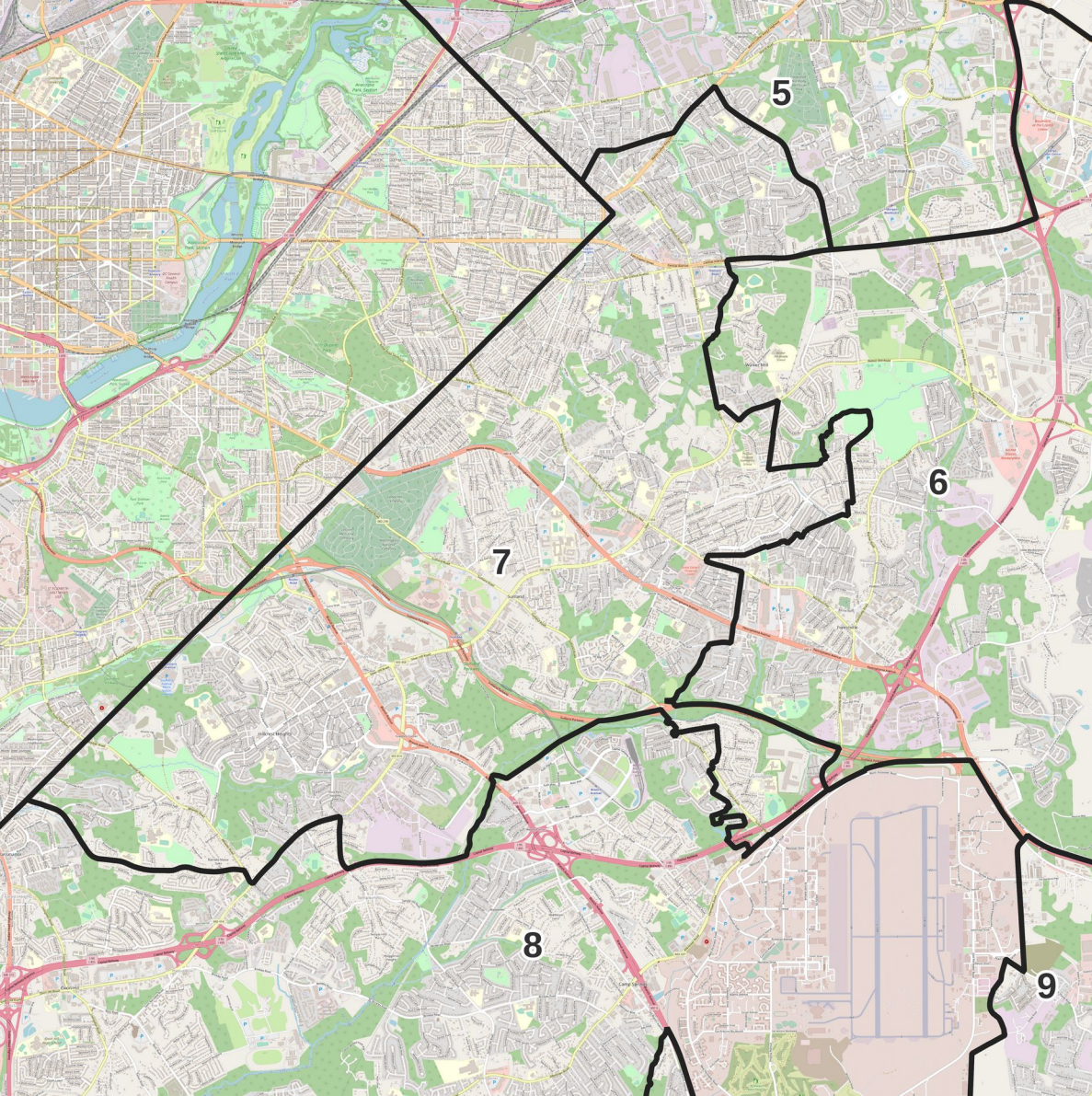
- The council member representing FedEx Field has particular influence over Stadium Impact Grants.
- These grants, funded by events at the stadium, support non-profits helping low-income families.
- Davis-Franklin plan moves FedEx field from low-income District 5 to District 6, which would be the richest in the county.



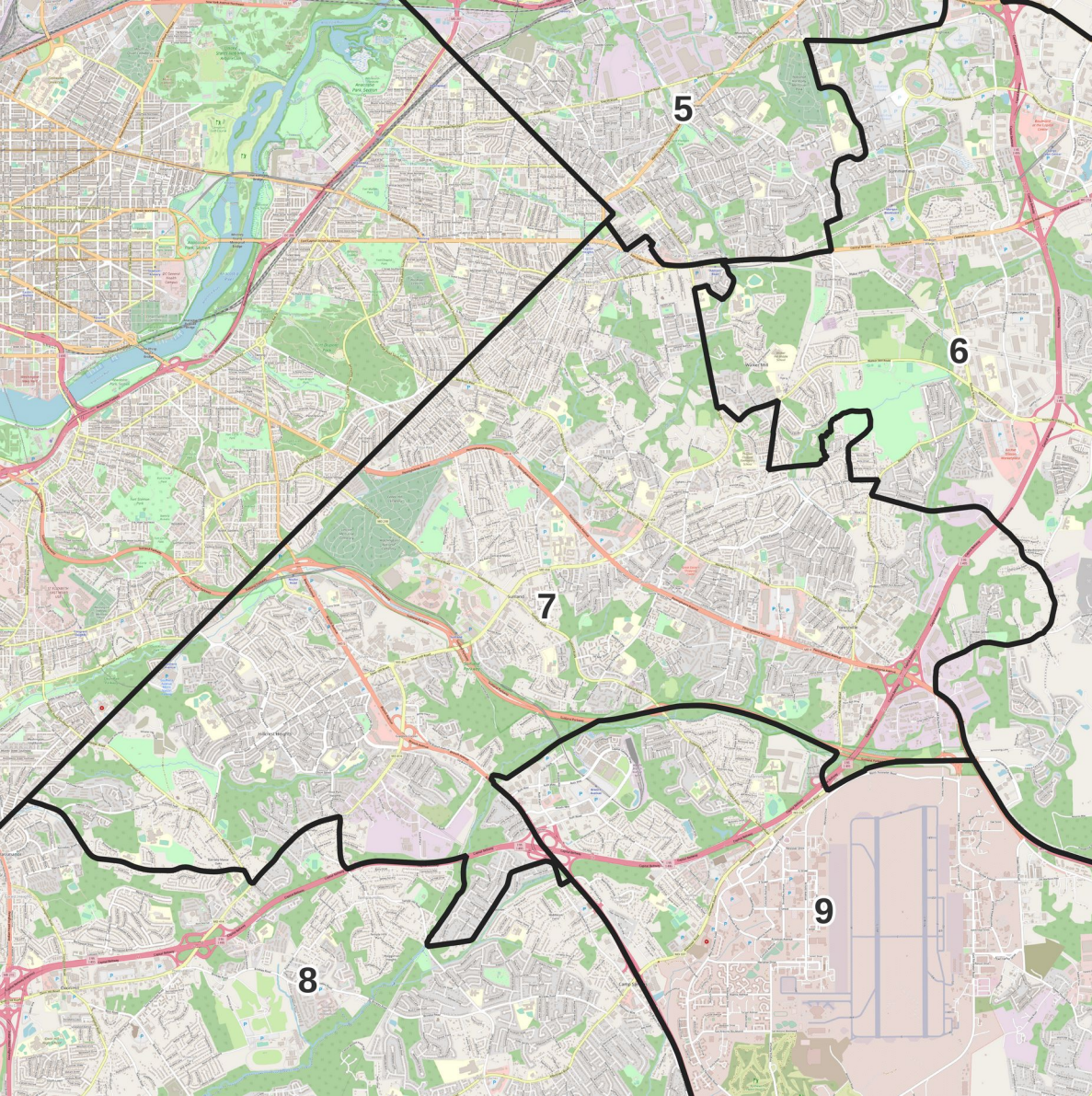
District 6: Commission Proposal



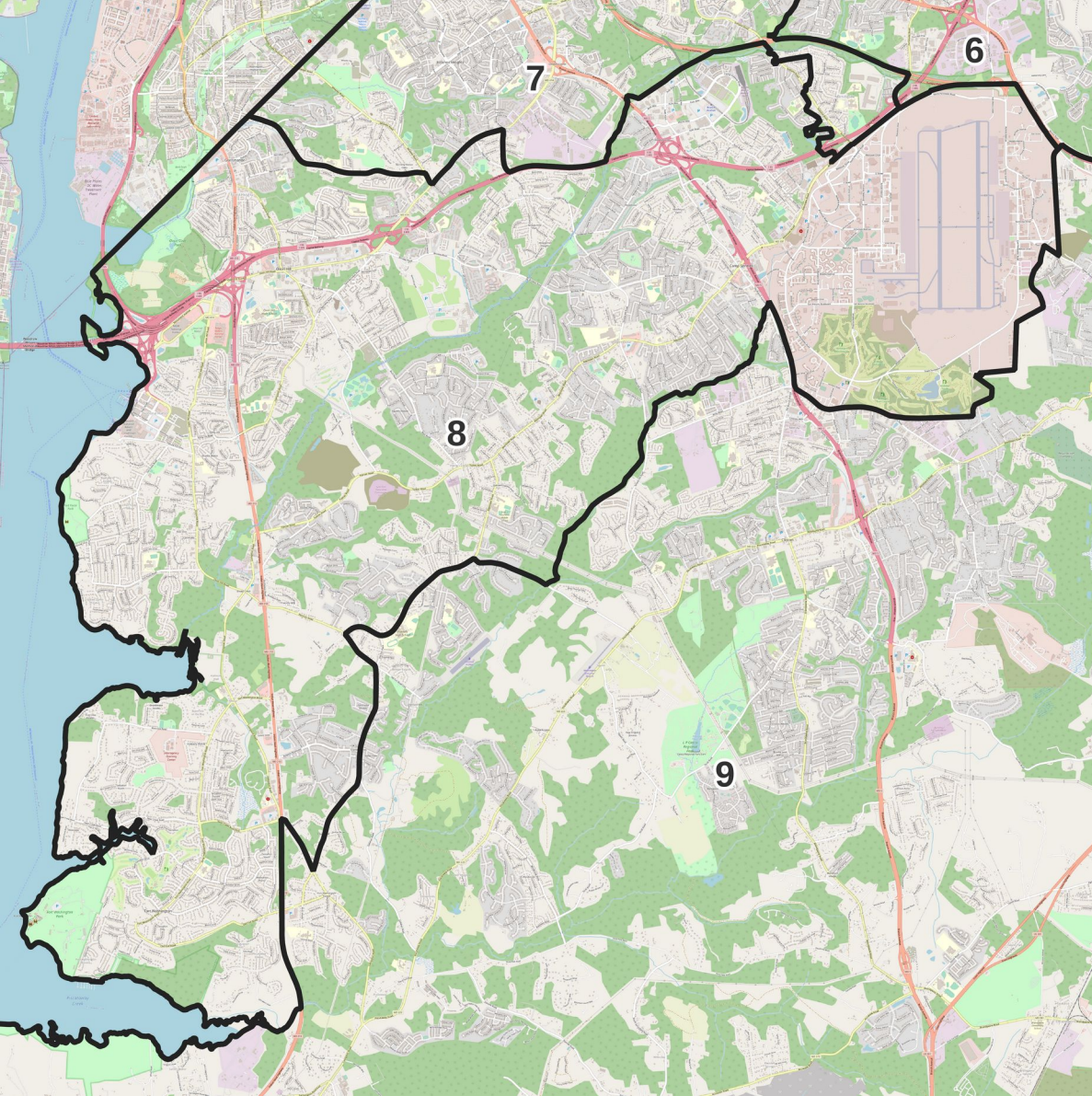
District 6: Davis-Franklin Proposal



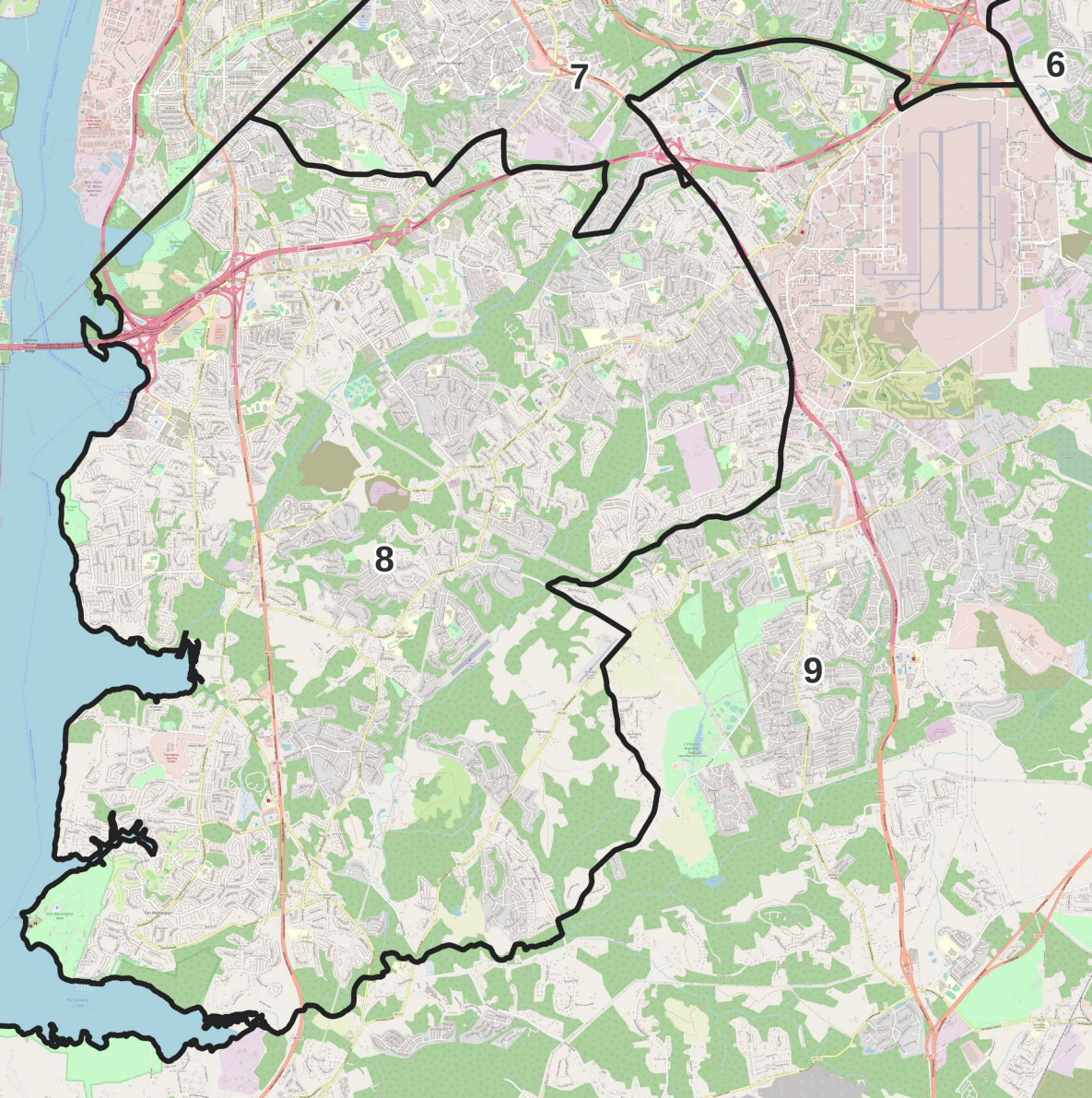
District 7: Commission Proposal



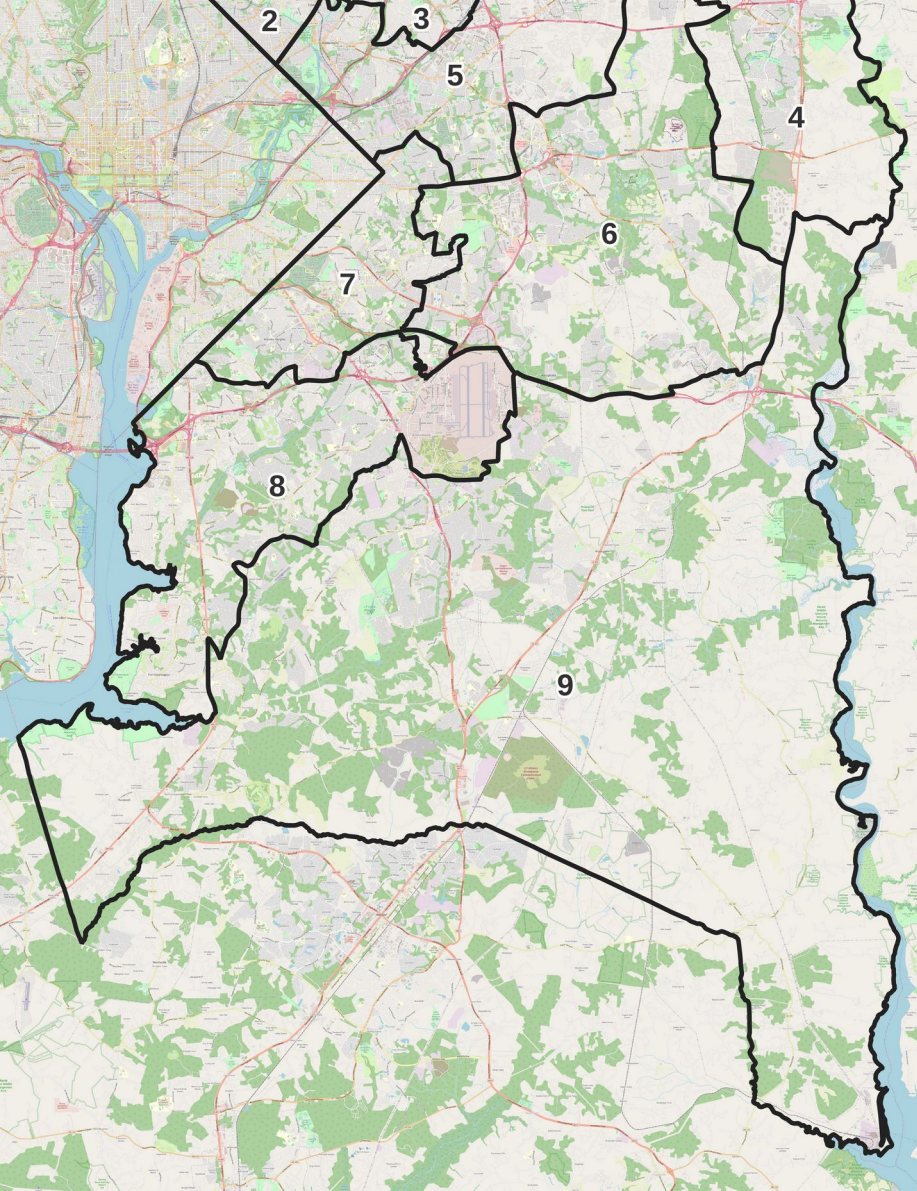
District 7: Davis-Franklin Proposal



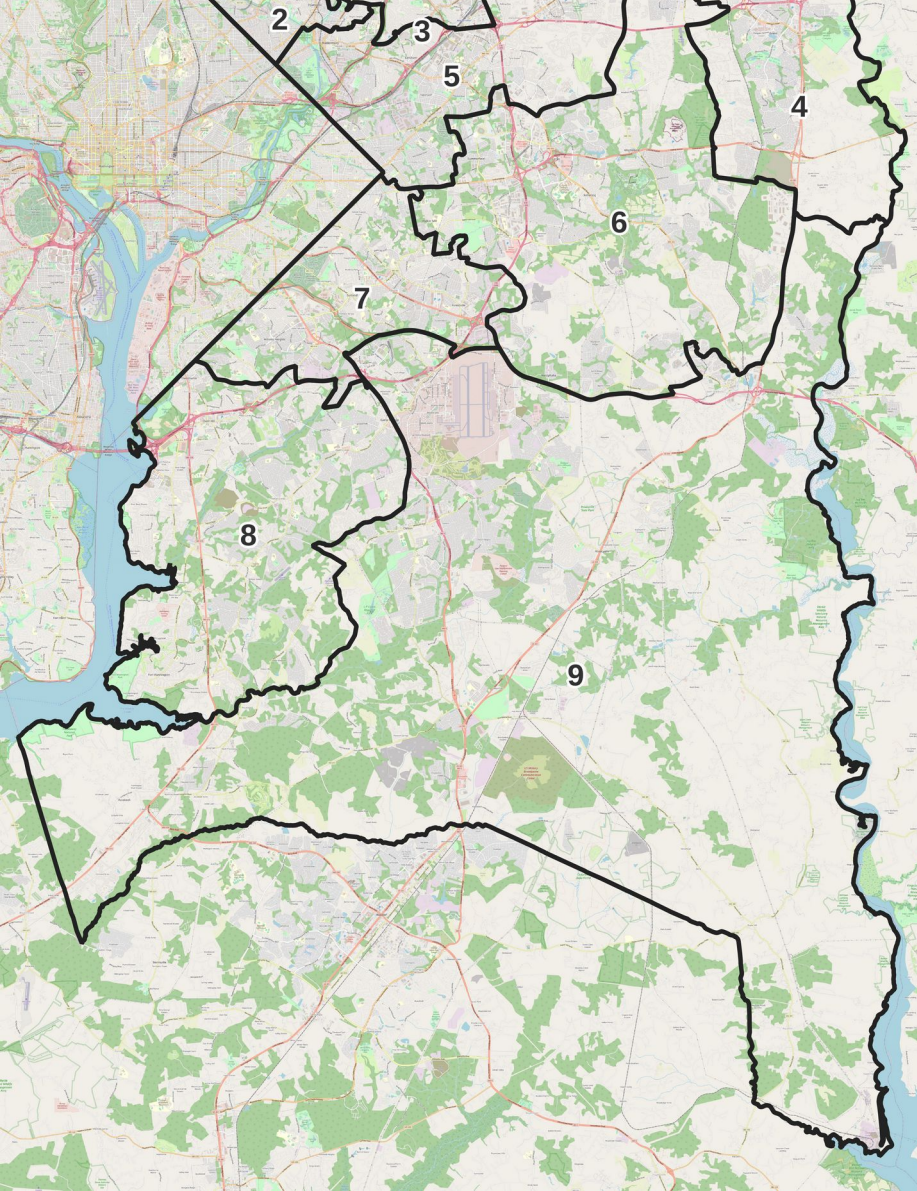
District 8: Commission Proposal



District 8: Davis-Franklin Proposal



District 9: Commission Proposal



District 9: Davis-Franklin Proposal

Davis-Franklin Plan Claims to Unite Municipalities

- College Park is divided between Districts 1 & 3 in both plans.
- Original Davis plan put College Park in District 1.
- When UMCP objected, Franklin amended it to move UMCP back to District 3, but changed from north-south to east-west split..
- Davis called this division of College Park “patently unfair to all other municipalities” *as he voted for the amendment*.
- College Park government strongly opposes the east-west division.
- Claim of uniting municipalities is hypocritical.

Davis-Franklin Plan Claims to Make a Majority-Latino District

- Both plans have 6 majority-Black districts out of 9 total. (The county is 63% Black.)
- The county is 20% Latino overall, but only 7% of voting-age citizens are Latino.
- Contrary to its proponents' claims, the Davis-Franklin plan does not meaningfully create a majority-Latino district.

Voting-Age Population by Race in Both Plans

	Commission Proposal		Davis-Franklin Proposal	
	Voting-Age Black Population	Voting-Age Latino Population	Voting-Age Black Population	Voting-Age Latino Population
District 1	46%	23%	44%	22%
District 2	37%	50%	36%	51%
District 3	38%	28%	39%	27%
District 4	56%	10%	57%	10%
District 5	70%	22%	71%	21%
District 6	90%	5%	90%	4%
District 7	88%	9%	89%	8%
District 8	72%	15%	73%	15%
District 9	77%	8%	77%	7%

Davis-Franklin Proposal Doesn't Create a Majority-Latino District 2

	% Latino in District 2		
	Total Population	Voting-Age Population	Voting-Age Citizen Population
Redistricting Commission Proposal	54.2%	49.5%	24.3%
Davis-Franklin Proposal	55.2%	50.6%	24.7%

Despite these demographics, District 2 has consistently elected Latino council members for the past four election cycles.

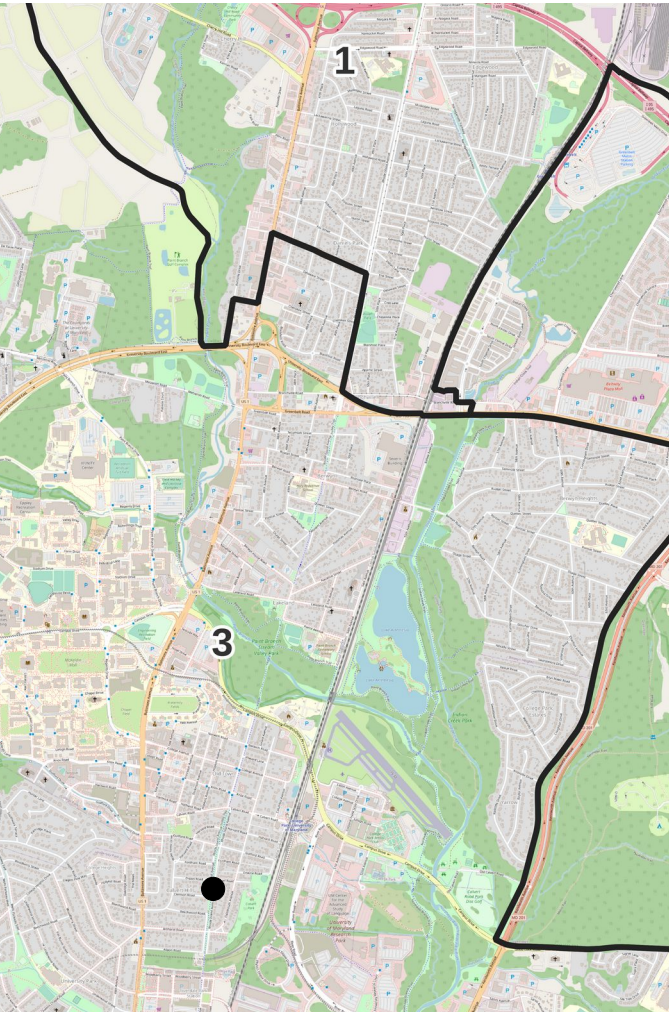
Income and Density Don't Change Much, Either

	Commission Proposal			Davis-Franklin Proposal		
	Fraction Inside Beltway	Median Household Income	Residents per Square Mile	Fraction Inside Beltway	Median Household Income	Residents per Square Mile
District 1	8%	\$85,000	4,000	33%	\$75,000	5,500
District 2	100%	\$65,000	11,000	100%	\$65,000	11,000
District 3	79%	\$75,000	6,500	63%	\$75,000	5,500
District 4	10%	\$110,000	3,000	0%	\$110,000	3,000
District 5	70%	\$75,000	4,000	73%	\$70,000	5,000
District 6	20%	\$100,000	2,500	21%	\$115,000	2,000
District 7	100%	\$60,000	7,000	98%	\$65,000	6,500
District 8	22%	\$95,000	3,000	15%	\$105,000	3,000
District 9	0%	\$120,000	1,000	8%	\$110,000	1,500

Choosing Who Can Run

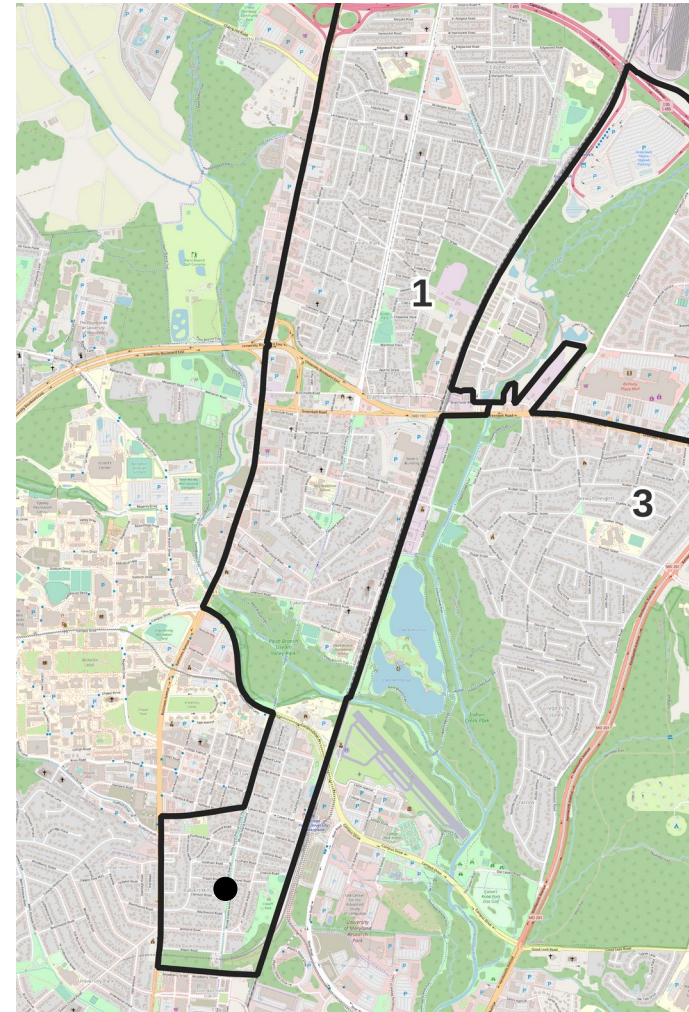
- This isn't partisan gerrymandering—Prince George's is a one-party county. However...
- To run for a district seat on the county council in 2022, a candidate must have lived in their district since last June.
- Several of the changes to district lines seem tailor-made to remove certain candidates from districts where they have been successful.

Candidates Moved Between Districts

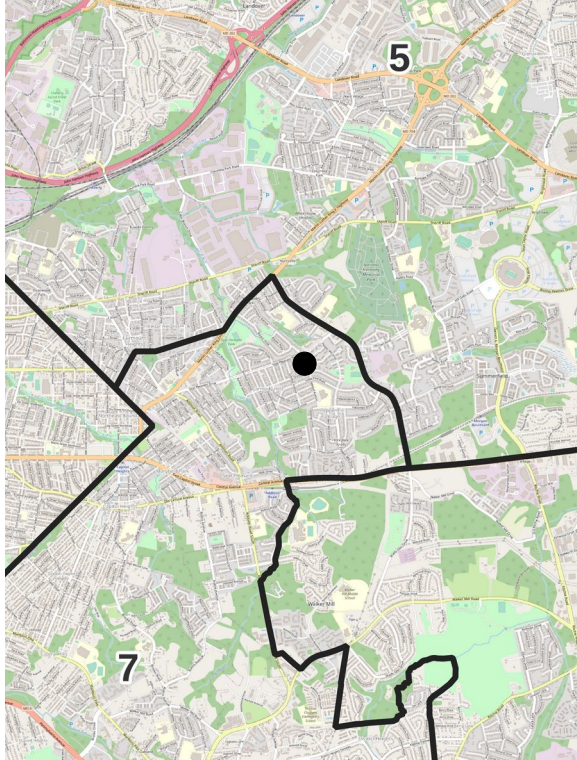


Eric Olson

- Held District 3 seat 2006-2014.
- Is campaigning for 2022 District 3 primary.

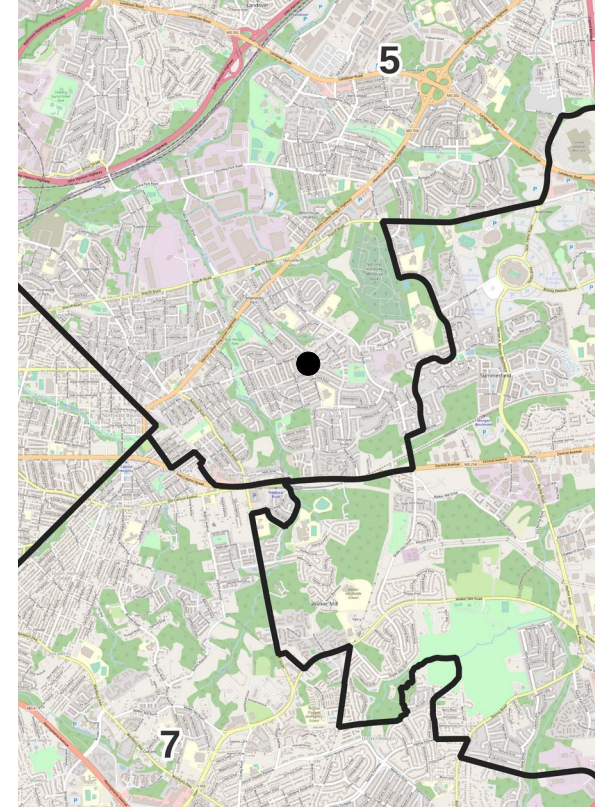


Candidates Moved Between Districts

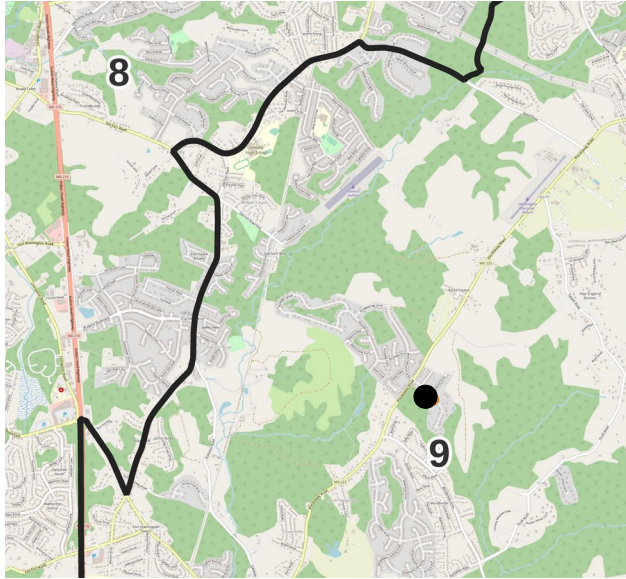


Krystal Oriadha

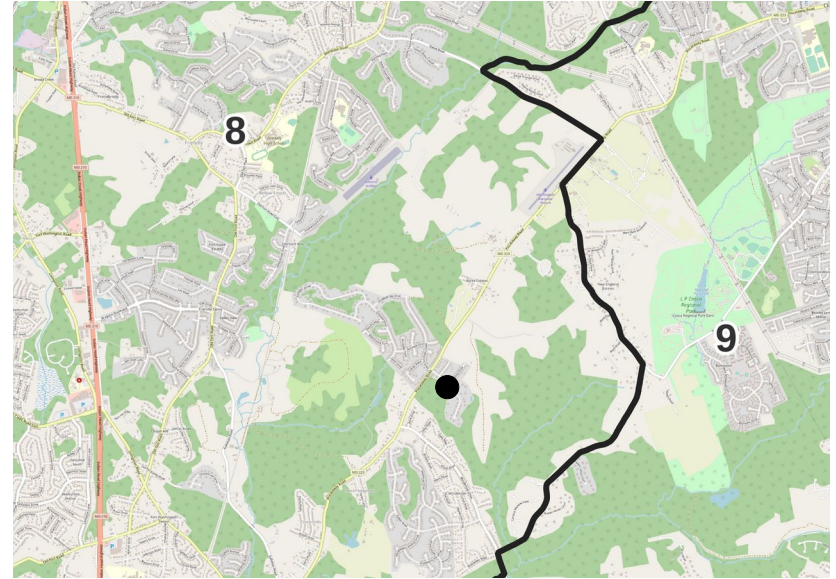
- Lost 2018 District 7 primary by 31 votes.
- Davis-Franklin plan moves her to District 5.



Candidates Moved Between Districts



Tamara
Davis
Brown



- Lost 2018 District 9 primary by 55 votes.
- Davis-Franklin plan moves her to District 8.